

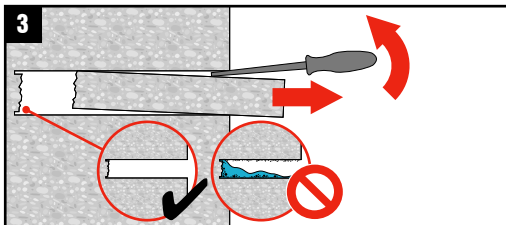
1



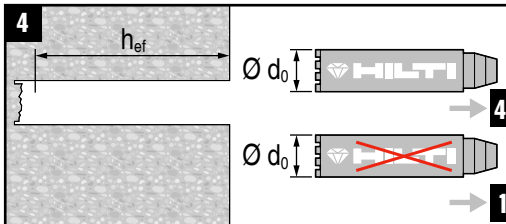
2



3



4

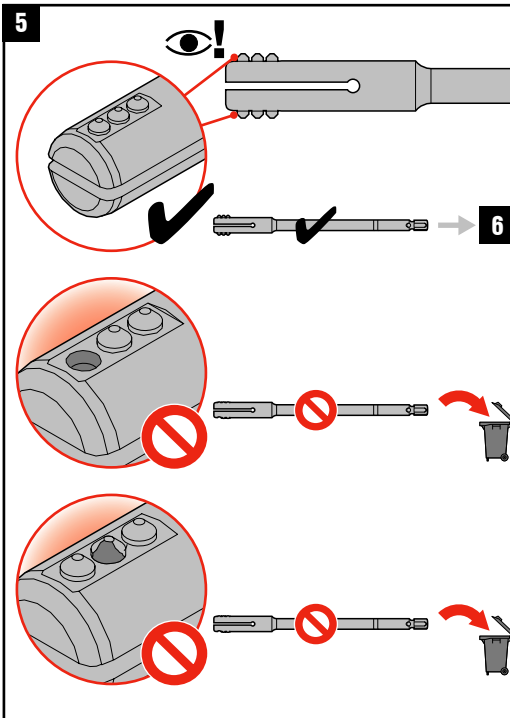


4.1

TE-YRT	Ø d ₀ [mm]	T2 T4	HCL / HCS / LCL LCS / HWC / UCL
18/320	18	✓	✓
20/320	20	✓	✓
22/400	22	✓	✓
25/400	25	✓	✓
28/480	28	✓	✓
30/540	30	✓	✓
32/500	32	✓	✓
35/600	35	✓	✗

TE-YRT	Ø d ₀ [inch]	T2 T4	HCL / HCS / LCL LCS / HWC / UCL
3/4" / 12 1/2"	3/4"	✓	✓
7/8" / 15"	7/8"	✓	✓
1" / 17 1/2"	1"	✓	✓
1 1/8" / 20"	1 1/8"	✓	✓
1 3/8" / 25"	1 3/8"	✓	✗

5

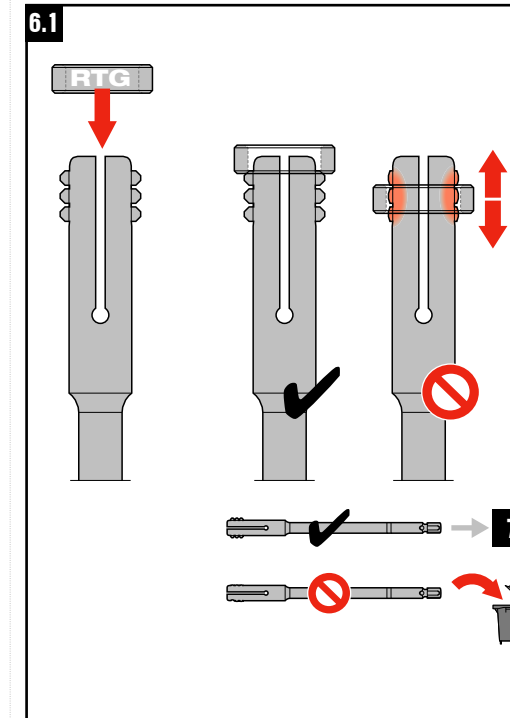


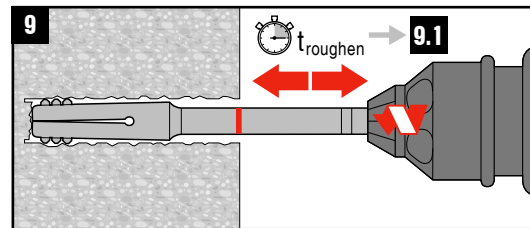
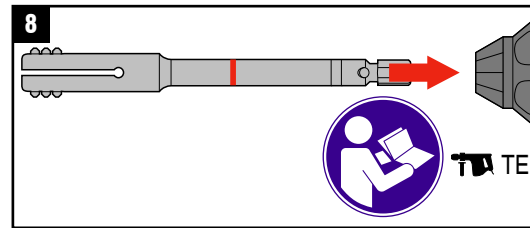
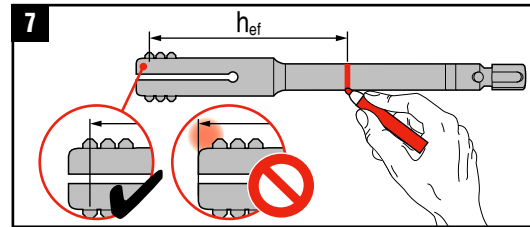
6

TE-YRT	RTG
TE-YRT 18/320	RTG 18
TE-YRT 20/320	RTG 20
TE-YRT 22/400	RTG 22
TE-YRT 25/400	RTG 25
TE-YRT 28/480	RTG 28
TE-YRT 30/540	RTG 30
TE-YRT 32/500	RTG 32
TE-YRT 35/600	RTG 35

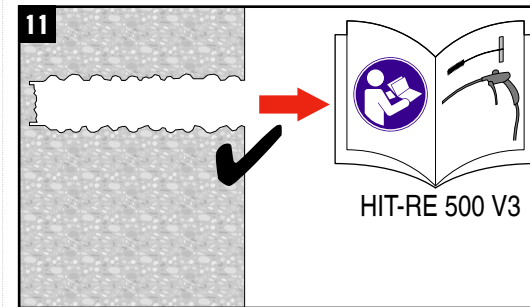
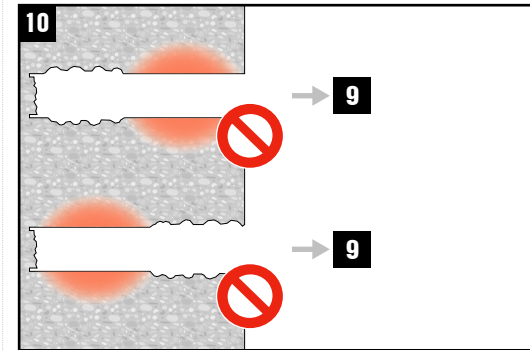
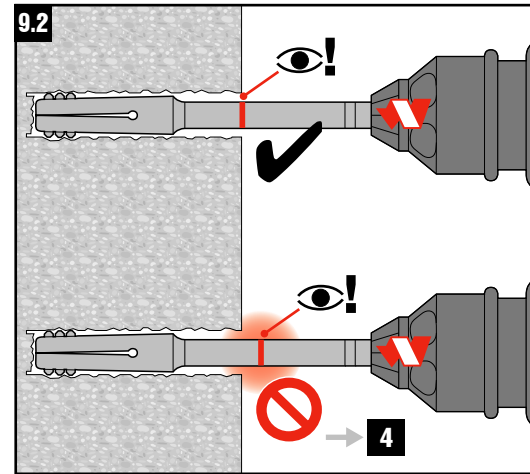
TE-YRT	RTG
TE-YRT 3/4" / 12 1/2"	RTG 3/4"
TE-YRT 7/8" / 15"	RTG 7/8"
TE-YRT 1" / 17 1/2"	RTG 1"
TE-YRT 1 1/8" / 20"	RTG 1 1/8"
TE-YRT 1 3/8" / 25"	RTG 1 3/8"

6.1





9.1	h_{ef} [mm]	$t_{roughen} (= h_{ef} / 10)$
	0 ... 100	10 sec
	101 ... 200	20 sec
	201 ... 300	30 sec
	301 ... 400	40 sec
	401 ... 500	50 sec
	501 ... 600	60 sec
	h_{ef} [inch]	$t_{roughen} (= h_{ef} \cdot 2.5)$
	0 ... 4	10 sec
	4.01 ... 8	20 sec
	8.01 ... 12	30 sec
	12.01 ... 16	40 sec
	16.01 ... 20	50 sec
	20.01 ... 25	60 sec



12	\diamond $\varnothing d_0$ [mm]	TE-YRT
	17,9 ... 18,2	TE-YRT 18/320
	19,9 ... 20,2	TE-YRT 20/320
	21,9 ... 22,2	TE-YRT 22/400
	24,9 ... 25,2	TE-YRT 25/400
	27,9 ... 28,2	TE-YRT 28/480
	29,9 ... 30,2	TE-YRT 30/540
	31,9 ... 32,2	TE-YRT 32/500
	34,9 ... 35,2	TE-YRT 35/600
	\diamond $\varnothing d_0$ [inch]	TE-YRT
	0.764 ... 0.776	TE-YRT 3/4" / 12 1/2"
	0.862 ... 0.874	TE-YRT 7/8" / 15"
	1.008 ... 1.020	TE-YRT 1" / 17 1/2"
	1.146 ... 1.157	TE-YRT 1 1/8" / 20"
	1.374 ... 1.386	TE-YRT 1 3/8" / 25"